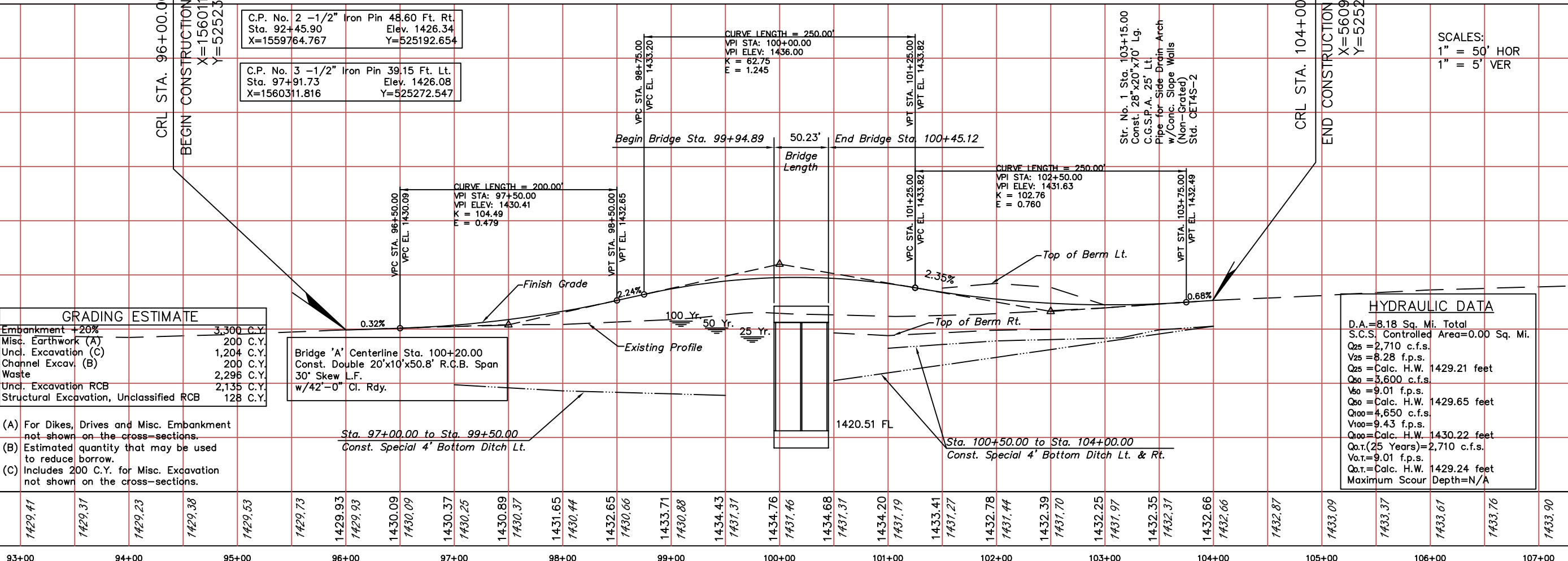
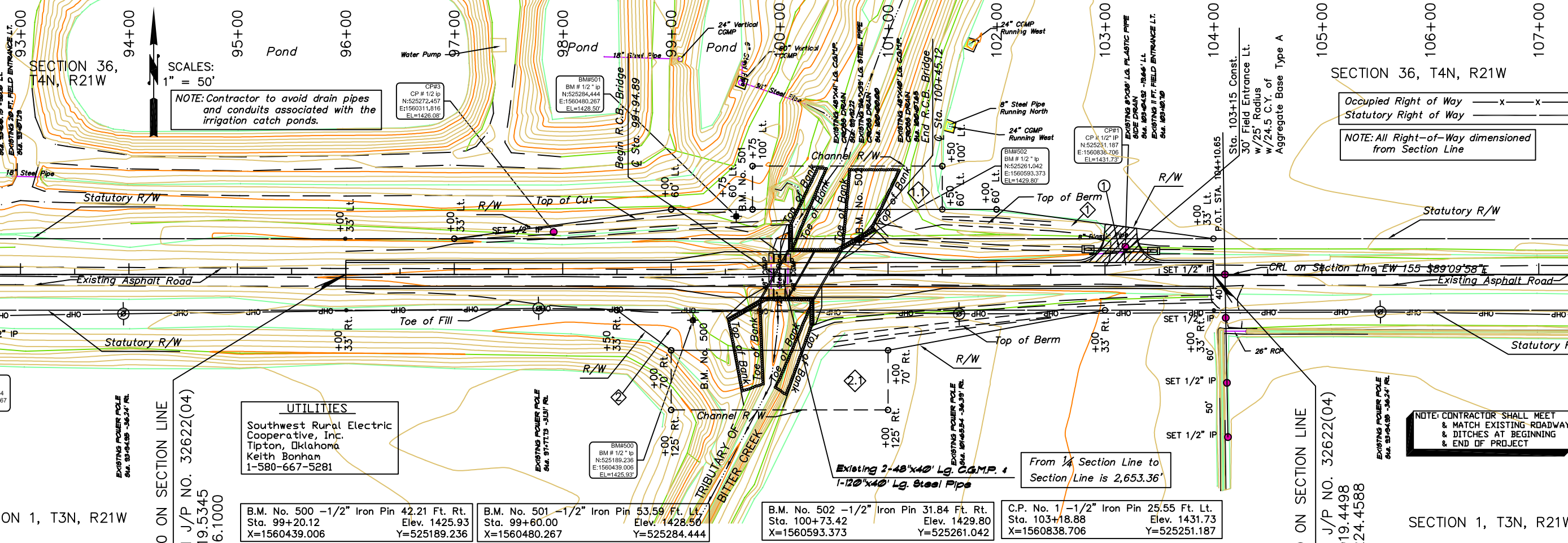


TRIBUTARY OF BITTER CREEK

JACKSON COUNTY



GRADING ESTIMATE

Embankment +20%	3,300 C.Y.
Misc. Earthwork (A)	200 C.Y.
Unc. Excavation (C)	1,204 C.Y.
Channel Excav. (B)	200 C.Y.
Waste	2,296 C.Y.
Unc. Excavation RCB	2,135 C.Y.
Structural Excavation, Unclassified RCB	128 C.Y.

- (A) For Dikes, Drives and Misc. Embankment not shown on the cross-sections.
- (B) Estimated quantity that may be used to reduce borrow.
- (C) Includes 200 C.Y. for Misc. Excavation not shown on the cross-sections.

Bridge 'A' Centerline Sta. 100+20.00
 Const. Double 20'x10'x50.8' R.C.B. Span
 30' Skew L.F.
 w/42'-0" Cl. Rdy.

Sta. 97+00.00 to Sta. 99+50.00
 Const. Special 4' Bottom Ditch Lt.

Sta. 100+50.00 to Sta. 104+00.00
 Const. Special 4' Bottom Ditch Lt. & Rt.

HYDRAULIC DATA

D.A. = 8.18 Sq. Mi. Total
 S.C.S. Controlled Area = 0.00 Sq. Mi.

Q₂₅ = 2,710 c.f.s.
 V₂₅ = 8.28 f.p.s.
 Q₅₀ = Calc. H.W. 1429.21 feet
 Q₅₀ = 3,600 c.f.s.
 V₅₀ = 9.01 f.p.s.
 Q₁₀₀ = Calc. H.W. 1429.65 feet
 Q₁₀₀ = 4,650 c.f.s.
 V₁₀₀ = 9.43 f.p.s.
 Q₁₀₀ = Calc. H.W. 1430.22 feet
 Q_{0.1} (25 Years) = 2,710 c.f.s.
 V_{0.1} = 9.01 f.p.s.
 Q_{0.1} = Calc. H.W. 1429.24 feet
 Maximum Scour Depth = N/A

B.M. No. 500 -1/2" Iron Pin 42.21 Ft. Rt. Sta. 99+20.12 Elev. 1425.93 X=1560439.006 Y=525189.236	B.M. No. 501 -1/2" Iron Pin 53.59 Ft. Lt. Sta. 99+60.00 Elev. 1428.50 X=1560480.267 Y=525284.444	B.M. No. 502 -1/2" Iron Pin 31.84 Ft. Rt. Sta. 100+73.42 Elev. 1429.80 X=1560593.373 Y=525261.042	C.P. No. 1 -1/2" Iron Pin 25.55 Ft. Lt. Sta. 103+18.88 Elev. 1431.73 X=1560838.706 Y=525251.187
--	--	---	---

C.P. No. 2 -1/2" Iron Pin 48.60 Ft. Rt. Sta. 92+45.90 Elev. 1426.34 X=1559764.767 Y=525192.654	C.P. No. 3 -1/2" Iron Pin 39.15 Ft. Lt. Sta. 97+91.73 Elev. 1426.08 X=1560311.816 Y=525272.547
--	--

SECTION 36, T4N, R21W
 Occupied Right of Way — x — x — x —
 Statutory Right of Way — — — — —
 NOTE: All Right-of-Way dimensioned from Section Line

NOTE: CONTRACTOR SHALL MEET & MATCH EXISTING ROADWAY & DITCHES AT BEGINNING & END OF PROJECT

SCALES:
 1" = 50' HOR
 1" = 5' VER